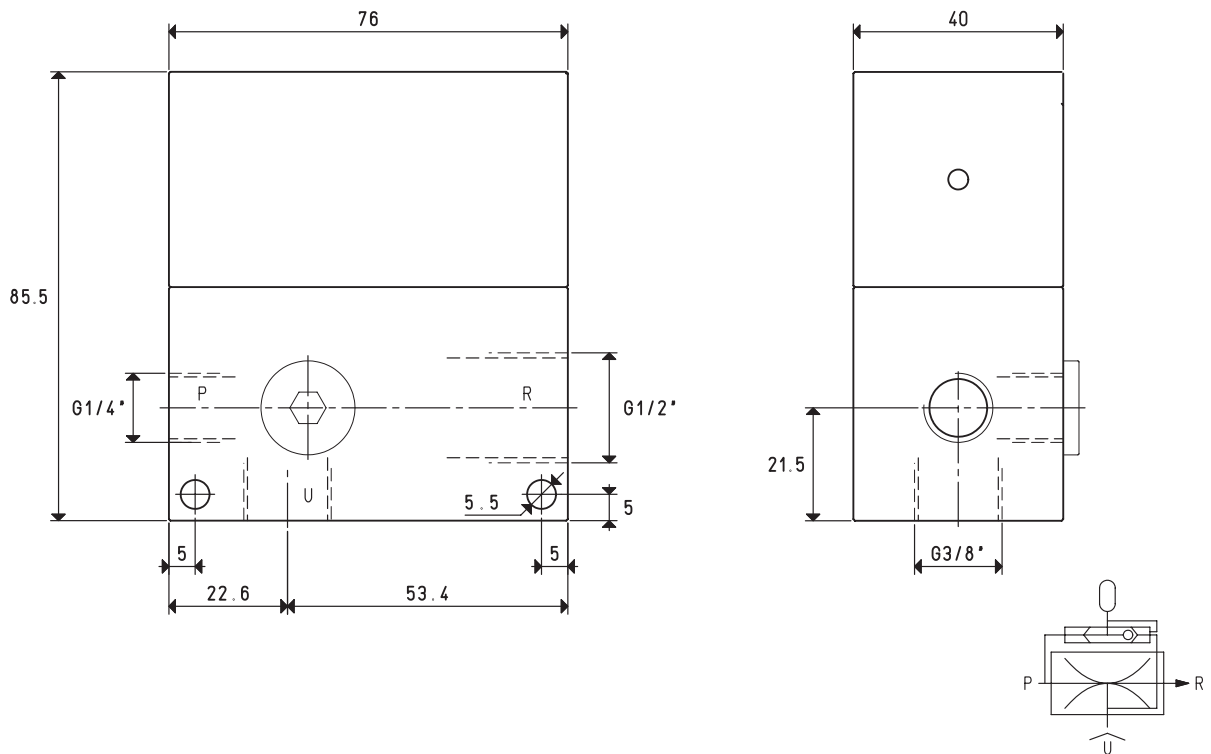


# SINGLE-STAGE VACUUM GENERATOR WITH EJECTOR 15 04 10



P=COMPRESSED AIR CONNECTION      R=EXHAUST      U=VACUUM CONNECTION

Item		15 04 10		
Intake air flow rate	m <sup>3</sup> /h	4.8	5	5
Maximum level of vacuum	-KPa	62	78	85
Final pressure	mbar abs.	380	220	150
Supply pressure	bar	4	5	6
Optimal supply pressure	bar			6
Air consumption	NI/s	1.1	1.3	1.6
Operating temperature	°C			-20 / +80
Noise level at optimal supply pressure	dB(A)			79
Weight	g			501
<b>Spare parts</b>		<b>15 04 10</b>		
Sealing kit	item			00 15 501

Note: All vacuum values indicated in the table are valid at the normal atmospheric pressure of 1013 mbar and obtained with a constant supply pressure.

Vacuum generator supply must be carried out with non-lubricated compressed air, 5 micron filtration, in accordance with standard ISO 8573-1 class 4.

Transformation ratio: N (newton) = Kg x 9.81 (force of gravity)

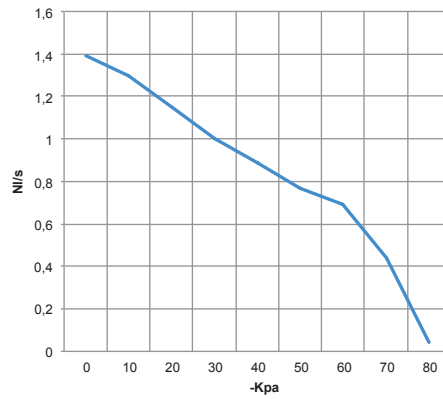
inch =  $\frac{\text{mm}}{25.4}$  ; pounds =  $\frac{\text{g}}{453.6} = \frac{\text{Kg}}{0.4536}$

Adapters for GAS - NPT threading available on page 1.130



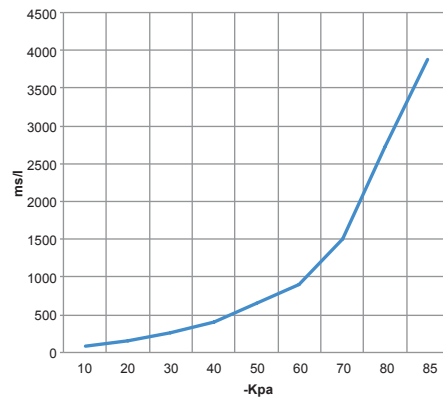
# SINGLE-STAGE VACUUM GENERATOR WITH EJECTOR 15 04 10

Air flow rate (NI/s) at different level of vacuum (-KPa) at optimal supply pressure



Generator item	Supp. press. bar	Air consumption NI/s	Air flow rate (NI/s) at different levels of vacuums (-KPa) at optimal supply pressure								Max vacuum -KPa	
			0	10	20	30	40	50	60	70		80
15 04 10	6.0	1.6	1.39	1.30	1.15	1.00	0.89	0.77	0.69	0.44	0.04	85

Evacuation rates (ms/l = s/m³) at different levels of vacuums (-KPa) at optimal supply pressure



Generator item	Supp. press. bar	Air consumption NI/s	Evacuation rates (ms/l = s/m³) at different levels of vacuums (-KPa) at optimal supply pressure							Max vacuum -KPa		
			10	20	30	40	50	60	70		80	85
15 04 10	6.0	1.6	77	154	261	403	649	902	1506	2730	3876	85

## ACCESSORIES UPON REQUEST

Silencer item SSX 1/2"

